



**Customer:** Hemp of the Rockies  
**Customer Sample ID:** Evening Calm Balm  
**Laboratory Number:** 19L0182-02



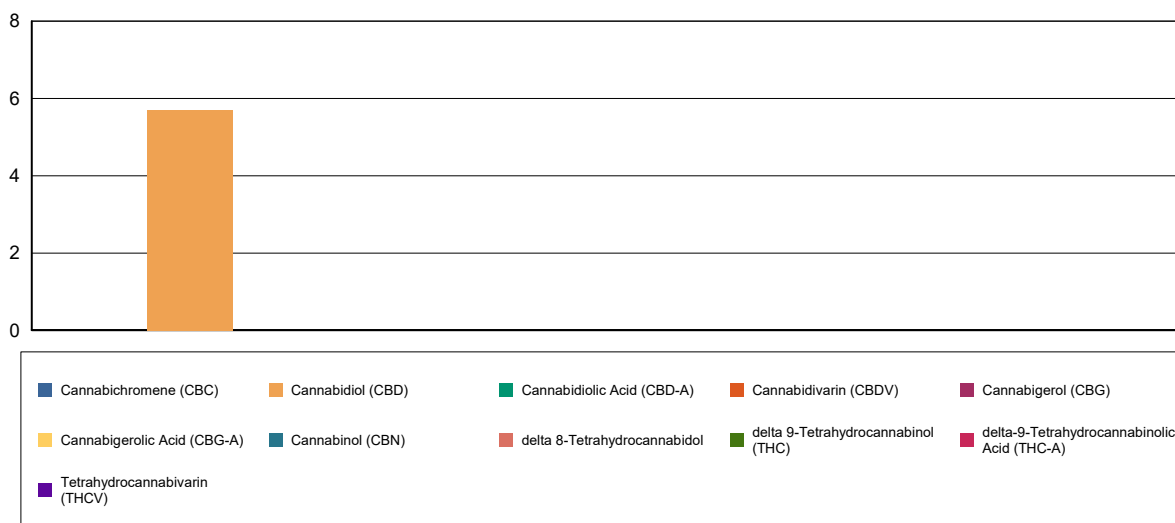
## Cannabinoid Profile

**Extraction Technician:** DF  
**Analytical Chemist:** CB

Extraction Date(s)	Analysis Date(s)
12/11/2019	12/12/2019

Cannabinoids (HPLC)		Results	
	LOD (mg/g)	%	mg/g
Cannabidivarin (CBDV)	<0.20		
Cannabidiolic Acid (CBD-A)	<0.20		
Cannabigerolic Acid (CBG-A)	<0.20		
Cannabigerol (CBG)	<0.20		
Cannabidiol (CBD)		0.57	5.70
Tetrahydrocannabivarin (THCV)	<0.20		
Cannabinol (CBN)	<0.20		
delta 9-Tetrahydrocannabinol (THC)	<0.20		
delta 8-Tetrahydrocannabidol	<0.20		
Cannabichromene (CBC)	<0.20		
delta-9-Tetrahydrocannabinolic Acid (THC-A)	<0.20		
Cannabinoids Total		%	mg/g
Max Active THC		0.00	0.00
Max Active CBD		0.57	5.70
T.Active Cannabinoids		0.57	5.70
Total Cannabinoids		0.57	5.70
Ratios			
NA:1 CBD to THC		0.00:1 THC to CBD	

### Cannabinoid (mg/g)



Altitude Consulting, LLC utilizes NIST traceable Reference Standards and Certified Reference Material to calibrate analytical instruments along with proven analytical methods. The methods are applied in the most ethical manner following good laboratory practice guidelines. The results of this report are based solely on the sample submitted and cannot be reproduced.