



Customer: Hemp of the Rockies
Customer Sample ID: Jojoba Body Oil
Laboratory Number: 19L0109-01

Density: 1.0205



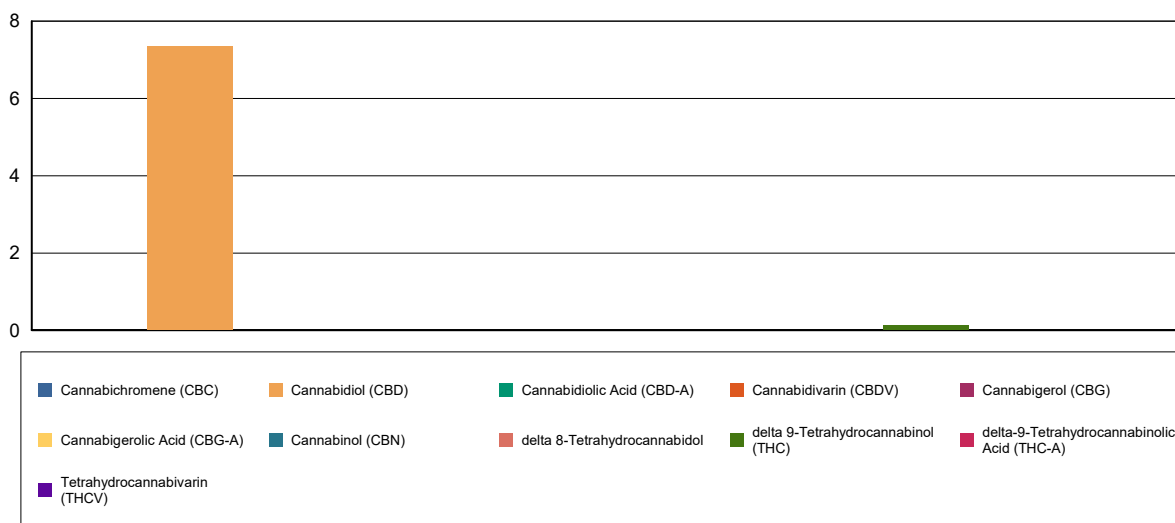
Cannabinoid Profile

Extraction Technician: CB
Analytical Chemist: CB

Extraction Date(s)	Analysis Date(s)
12/6/2019	12/6/2019

Cannabinoids (HPLC)		Results	
	LOD (mg/mL)	%	mg/mL
Cannabidivarin (CBDV)	<0.10		
Cannabidiolic Acid (CBD-A)	<0.10		
Cannabigerolic Acid (CBG-A)	<0.10		
Cannabigerol (CBG)	<0.10		
Cannabidiol (CBD)		0.73	7.35
Tetrahydrocannabivarin (THCV)	<0.10		
Cannabinol (CBN)	<0.10		
delta 9-Tetrahydrocannabinol (THC)		0.01	0.128
delta 8-Tetrahydrocannabidol	<0.10		
Cannabichromene (CBC)	<0.10		
delta-9-Tetrahydrocannabinolic Acid (THC-A)	<0.10		
Cannabinoids Total		%	mg/mL
Max Active THC		0.01	0.13
Max Active CBD		0.74	7.35
T.Active Cannabinoids		0.75	7.47
Total Cannabinoids		0.75	7.47
Ratios			
57.48:1 CBD to THC		0.02:1 THC to CBD	

Cannabinoid (mg/mL)



Altitude Consulting, LLC utilizes NIST traceable Reference Standards and Certified Reference Material to calibrate analytical instruments along with proven analytical methods. The methods are applied in the most ethical manner following good laboratory practice guidelines. The results of this report are based solely on the sample submitted and cannot be reproduced.



Customer: Hemp of the Rockies
Customer Sample ID: Almond Body Oil
Laboratory Number: 19L0109-02

Density: 1.0205



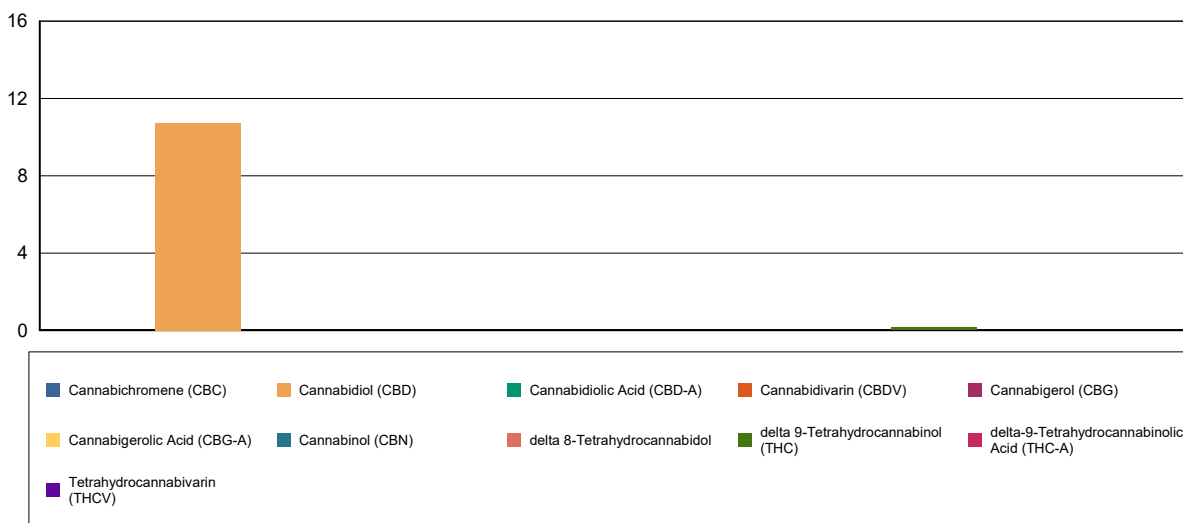
Cannabinoid Profile

Extraction Technician: CB
Analytical Chemist: CB

Extraction Date(s)	Analysis Date(s)
12/6/2019	12/6/2019

Cannabinoids (HPLC)		Results	
	LOD (mg/mL)	%	mg/mL
Cannabidivarin (CBDV)	<0.10		
Cannabidiolic Acid (CBD-A)	<0.10		
Cannabigerolic Acid (CBG-A)	<0.10		
Cannabigerol (CBG)	<0.10		
Cannabidiol (CBD)		1.07	10.7
Tetrahydrocannabivarin (THCV)	<0.10		
Cannabinol (CBN)	<0.10		
delta 9-Tetrahydrocannabinol (THC)		0.02	0.154
delta 8-Tetrahydrocannabidol	<0.10		
Cannabichromene (CBC)	<0.10		
delta-9-Tetrahydrocannabinolic Acid (THC-A)	<0.10		
Cannabinoids Total		%	mg/mL
Max Active THC		0.02	0.15
Max Active CBD		1.07	10.70
T.Active Cannabinoids		1.09	10.90
Total Cannabinoids		1.09	10.90
Ratios			
69.52:1 CBD to THC		0.01:1 THC to CBD	

Cannabinoid (mg/mL)



Altitude Consulting, LLC utilizes NIST traceable Reference Standards and Certified Reference Material to calibrate analytical instruments along with proven analytical methods. The methods are applied in the most ethical manner following good laboratory practice guidelines. The results of this report are based solely on the sample submitted and cannot be reproduced.



Customer: Hemp of the Rockies
Customer Sample ID: Joint Juice Balm
Laboratory Number: 19L0109-03



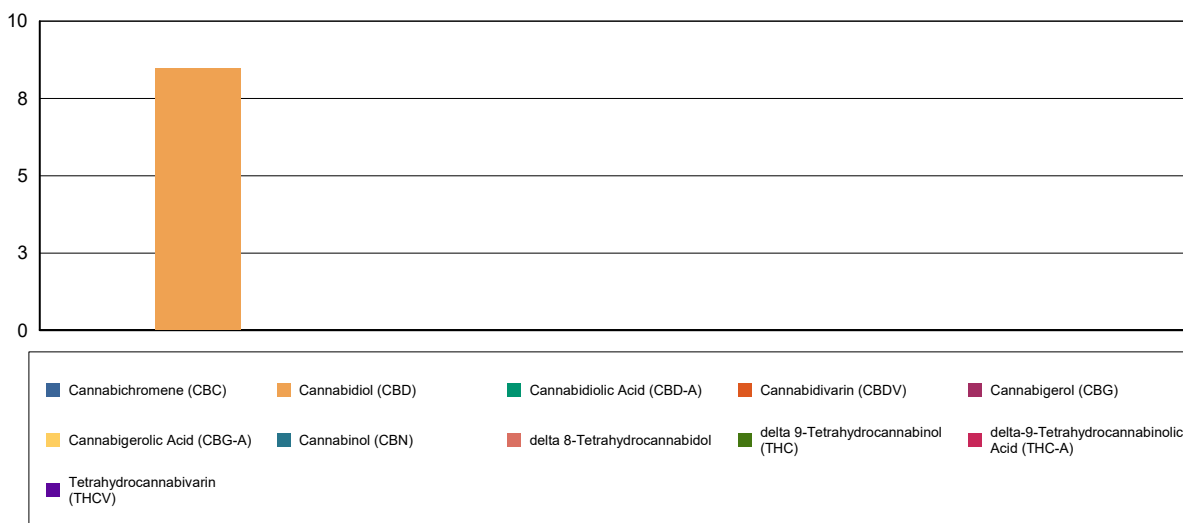
Cannabinoid Profile

Extraction Technician: CB
Analytical Chemist: CB

Extraction Date(s)	Analysis Date(s)
12/6/2019	12/6/2019

Cannabinoids (HPLC)		Results	
	LOD (mg/g)	%	mg/g
Cannabidiol (CBD)	<0.20	0.85	8.46
Cannabidiol (CBD)	<0.20		
Cannabidiolic Acid (CBD-A)	<0.20		
Cannabigerolic Acid (CBG-A)	<0.20		
Cannabigerol (CBG)	<0.20		
Cannabidivarin (CBDV)	<0.20		
Tetrahydrocannabivarin (THCV)	<0.20		
Cannabinol (CBN)	<0.20		
delta 9-Tetrahydrocannabinol (THC)	<0.20		
delta 8-Tetrahydrocannabidol	<0.20		
Cannabichromene (CBC)	<0.20		
delta-9-Tetrahydrocannabinolic Acid (THC-A)	<0.20		
Cannabinoids Total		%	mg/g
Max Active THC		0.00	0.00
Max Active CBD		0.85	8.46
T.Active Cannabinoids		0.85	8.46
Total Cannabinoids		0.85	8.46
Ratios			
NA:1 CBD to THC		0.00:1 THC to CBD	

Cannabinoid (mg/g)



Altitude Consulting, LLC utilizes NIST traceable Reference Standards and Certified Reference Material to calibrate analytical instruments along with proven analytical methods. The methods are applied in the most ethical manner following good laboratory practice guidelines. The results of this report are based solely on the sample submitted and cannot be reproduced.